



Artist Impression

Facade BSY3-R1

## Lot 70 - Stage 2A

# \$754,000

3

Bedroom

2

Bathroom

1

Garage

159

GFA M2

### COMFORT PACKAGE OVERVIEW

- EXSULITE® THERMAL FACADE CLADDING SYSTEM RENDERED FINISH
- TIMBER FRAMES AND TRUSSES
- COLORBOND ROOF, FASCIA AND GUTTER
- MOTORISED GARAGE DOOR
- 7-STAR BASIX PROVISIONS
- HI-WALL REVERSE CYCLE AIR CONDITIONING
- SLIDING WINDOWS AND DOORS
- SQUARE SET PLASTERBOARD FINISH
- ALFRESCO INCLUDED
- OPTIONAL DOUBLE GARAGE
- OPTIONAL EXTERNAL LANDSCAPING & PATH PACKAGES
- ABUNDANCE PACKAGE UPGRADE AVAILABLE
- FLOOR PLAN & FACADE UPGRADE AVAILABLE
- INCLUDES CONCRETE DRIVEWAY

M. 0477 834 420  
 E. hello@yarrahass.com.au  
 W. YarrahYass.com.au



Artist Impression

Facade BSY3-R3

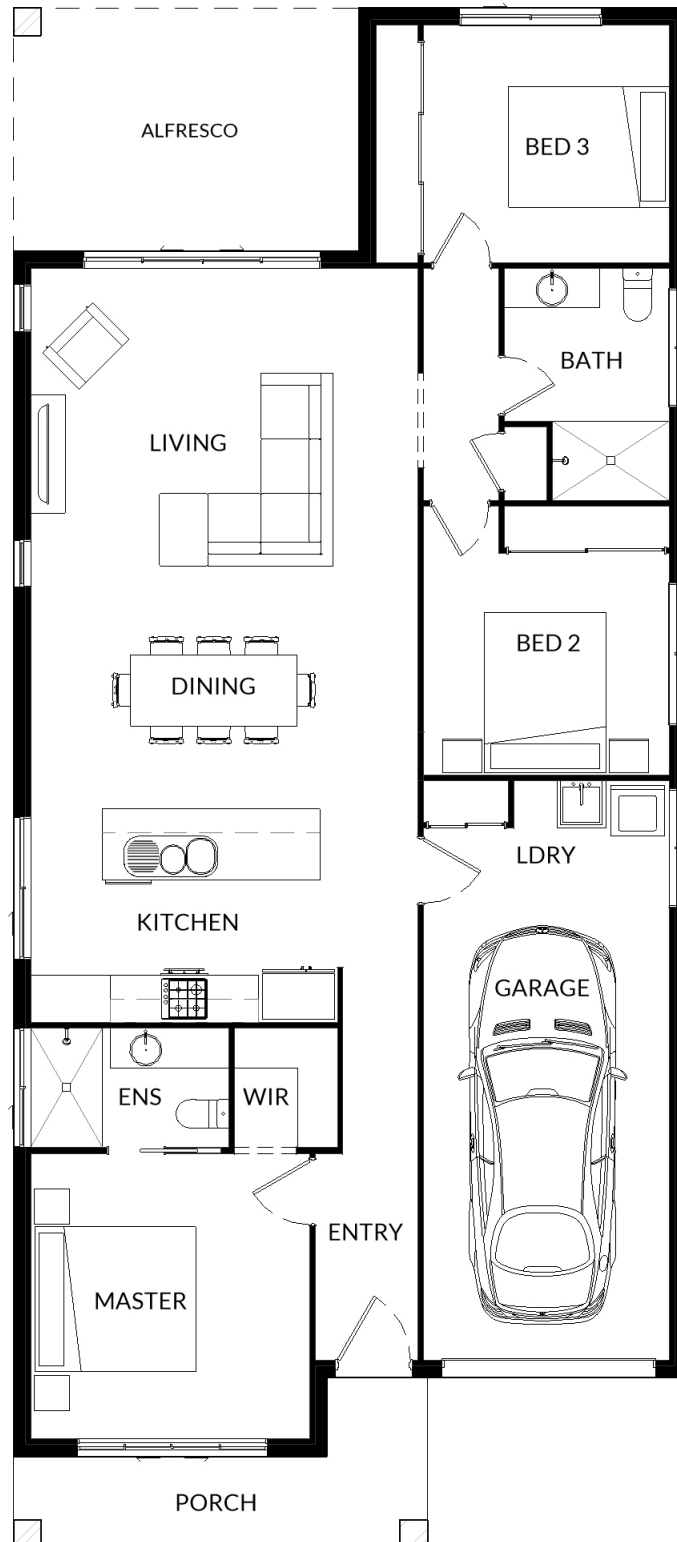


Artist Impression

Facade BSY3-R2

# BSY3 Bellemont Series

## Lot 70-Stage 2A



\*Conditions apply to all House and Land Packages: WMD Construction as the licenced builder will provide a construction contract for the house and the purchaser will separately enter into a contract to purchase the land directly from the landowner. This advertised offer is subject to availability, statutory approval and a successful settled land contract. WMD Construction reserves the right to change prices or inclusions advertised without further notice. For additional information on detailed house pricing, including standard house inclusions, house package inclusions, optional upgrades and variations, please talk to one of our consultants. The images shown in this brochure may include upgraded fixtures, finishes and features including some items that subject to the package selected by the purchaser may not be supplied by WMD Construction such as window and household furnishing, landscaping, fencing, paving and footpath. The plan and facade renders are copyright of WMD Construction ABN 98 604 001 783, Licence number 399772C and no part may be reproduced or copied without prior written consent.